

Harvard Group
for New Music

Ensemble Recherche

8PM
October 9

John Knowles Paine Hall
Harvard University

Ensemble Recherche

JAUME DARBRA FA

flute

SHIZUYO OKA

clarinets

EDUARDO OLLOQUI

oboe

KLAUS STEFFES-HOLLÄNDER

piano

MELISE MELLINGER

violin

VICTOR GUAITA IGUAL

viola

ÅSA AKERBERG

cello

VICTOR ARUL

amblygon 2022

WEILU GE

Station Opera - Aria 2022

CHRIS LOCK

red, going through pinks, to white 2022

GOLNAZ SHARIATZADEH

**with no memories, i carry
your sound** 2022

INTERMISSION

STEPHEN DE FILIPPO

contrasted moments 2022

JONAH HAVEN

i view it as a smooth body 2022

Please join us following the concert for a reception in the Taft Lounge downstairs

A b o u t t h e m u s i c

VICTOR ARUL

amblygon 2022

An amblygon is any geometric figure which contains at least one obtuse angle. A topological construction of this sort needs some sort of 'bridge' to convene the wide angles implicated by at least two sides of this shape (unless this is an open shape). I like to imagine what sorts of 'bridges' can be formed within the theoretical scope of an amblygon - and how a strenuous or flimsy bridge might be used to convene the other two sides. My piece presents a vague analogue to this idea, delineating two distinctive sonic paths which are frailly plastered at the end of the piece.

BIO Victor Arul is a composer from Perth, Western Australia. He holds undergraduate degrees from the Universities of Melbourne and Western Australia. Prior to his studies at Harvard, Victor has had the privilege of receiving compositional guidance from James Ledger, Olivia Davies, Elliott Gyger, Christopher Tonkin, Tim Dargaville, Miriama Young, Stuart Greenbaum, Melody Eötvös, and Iain Grandage.

WEILU GE

Station Opera - Aria 2022

Every time I walk into the train station, I hear many interesting and compelling sonic moments that often bring unique and bold propositions. As Jean-Luc Nancy wrote "sound conjugates with space, it crosses space." I wish to reconstruct a spatial experience for sensing the resonance coming from all the trivia

BIO Weilu Weilu Ge is a composer and media artist based in Cambridge, MA. She works with various media forms, from concert music, installation to video and innovative technology. Since 2015, she has focused her research and career on experimental and intermedia theatre in the role of a Composer-Director, exploring the potential of sound and space as the medium that integrates other art forms and helps create a comprehensive artistic expression. She is interested in blurring the boundaries between minimalism and complexity, noise and silence,

seeing and listening. Her recent practices and experiments often center around theatrical expression and dramaturgy of sonic, visual and spatial media, taking composition and space as critical means to inquiry issues around and relations between power, system, body, and technology in a social-cultural context. Weilu holds an Interschool MFA in Art and Technology & Composition & Experimental Sound Practice with a concentration in Integrated Media from the California Institute of the Arts. She is currently a PhD candidate in Creative Practice & Critical Inquiry at Harvard University. theater.

CHRIS LOCK

red, going through pinks, to white 2022

This piece for violin, cello, bowed crotales, and electronic sound meditates on ideas of slowness, sweetness, gentleness, and their exact opposites. Written for Ensemble Recherche in August 2022.

BIO Christopher Lock (lock-music.com) is an electroacoustic composer and digital media artist based in Cambridge, MA. His works are often densely textural with dark imagery slowly morphing and mutating over time..

GOLNAZ SHARIATZADEH

with no memories, i carry your sound 2022

with no memories, i carry your sound

within me, is hollow, grand

within me, somebody wrote all the places i have been

i am heavy and am slowly growing

There is a creature stuck in a claustrophobic room. It doesn't know what it is nor where it belongs. Feeling detached from its limbs and organs, it slowly unravels to know....

BIO Golnaz Shariatzadeh is a composer and improviser interested in crystallizing, liberating and unfolding the hidden layers of the sound to bring its complex nature to the surface. Through experimentation with the material and time, she reveals the unnatural, irregular and unpredictable unfolding of sound textures resulting from its encounter with other sounds through space.

INTERMISSION

STEPHEN DE FILIPPO

contrasted moments 2022

This work, presented in two sections, explores contrasting settings for the violin, clarinet, percussion and piccolo quartet. In the opening the clarinet and violin sound together in a raucous kind of dialogue, where the instruments have a similar trajectory, but sound independent. Then, the two join the percussion to create a ticking, rhythmic support, which the piccolo sings and warbles atop of.

BIO Stephen de Filippo is a composer from the South West region of Western Australia. Working in both acoustic and electronic-acoustic domains, Stephen's compositions centre on experimental performance practice, considerations on place, and often, a notational style that utilises time durations as an alternative to conventional metre. In addition to composition, Stephen performs with a megaphone — projecting liminal sounds, and is also undertaking a research project that considers the development of Australian musical nationalism as a response to the concept of cultural cringe. Stephen is currently a doctoral candidate at the University of California, San Diego, and has recently relocated to Boston to undertake a year-long fellowship at Harvard University's Department of Music.

JONAH HAVEN

i view it as a smooth body 2022

i view it as a smooth body.
massive. hungering. in water.
open mouth. pleasure.

it is a whale with a hole, like me,
a throated expanse. towered tunnel. again,
does it want? and again.

BIO Jonah Nuoja Luo Haven (born 1995 in OH, USA), laureate of the 2018 Bernd-Alois-Zimmermann Composition Prize of the City of Cologne, is a composer, improviser, and pianist. Driven by writers of Auto-theory, he composes as a way of bearing loose witness to his life — an expression of aging. His primary mentors have included Chaya Czernowin, Sabrina Schroeder, Josh Levine, and Aaron Helgeson. Current collaborations include a vocal duet for Duo Timbral, a concert-length work titled being-sent for catinblack ensemble, and a portrait CD titled gasser to be released in early 2023 through Edition Zeitgenössische Musik featuring ensemble recherche, Trio Catch, Wolftone, Duo XAMP, and ensemble proton bern. He holds a bachelor's degree from Oberlin Conservatory under the guidance of Josh Levine and Aaron Helgeson, a master's degree from the Hochschule für Musik und Tanz Köln with Brigitta Muntendorf, and is currently pursuing a Ph.D. at Harvard University with Chaya Czernowin and Hans Tutschku.

A b o u t t h e m u s i c i a n s

The members of the **Ensemble Recherche** have been dedicated to the new and unknown since 1985. The ensemble has shaped contemporary music and written musical history during this period of more than three decades – with in excess of 600 premiers and more than 50 CD recordings. The eight musicians, all internationally known soloists in the field of contemporary music, combine immense pleasure in

experimentation with enthusiasm for intensive consideration of the present time. The eight soloists place their enormous musicality and their individual personalities at the service of the collective so that they can research the musical present together, as an ensemble. The considerable energy and personal commitment of each and every explains why the independent ensemble has been recognised as one of the most important players of contemporary music for more than three decades

A b o u t H G N M

Kelley Sheehan

Director

Victor Arul, Darcy Copland, Jonah Haven, Chris Lock, Sonja Mutić, Elena Rykova, Golnaz Shariatzadeh, Zeynep Toraman, Lorenzo Troiani, Julien Vincenot, Julio Zúñiga

Members

Established in 1984, Harvard Group for New Music brings together the community of graduate student composers at Harvard University. The primary purpose of HGNM is to perform works by its membership, to develop musical and professional relationships beyond the group, and to provide fora for regular critical discussion with weekly presentations from current students as well as guest speakers.

hgnm.org



A c k n o w l e d g m e n t s

Chaya Czernowin

Walter Bigelow Rosen Professor of Music

Hans Tutschku

Fanny P. Mason Professor of Music & Director of HUSEAC

Nancy Shafman

Director of Administration

Kalan Chang

Financial Manager

Beth Mullins

Director of Events

Seth Torres

HUSEAC Technical Director

Kai Crull

Bríd Coogan

Austin Grimes

Richard Gruenler

Eva Kim

Music Department Staff

José Portillo

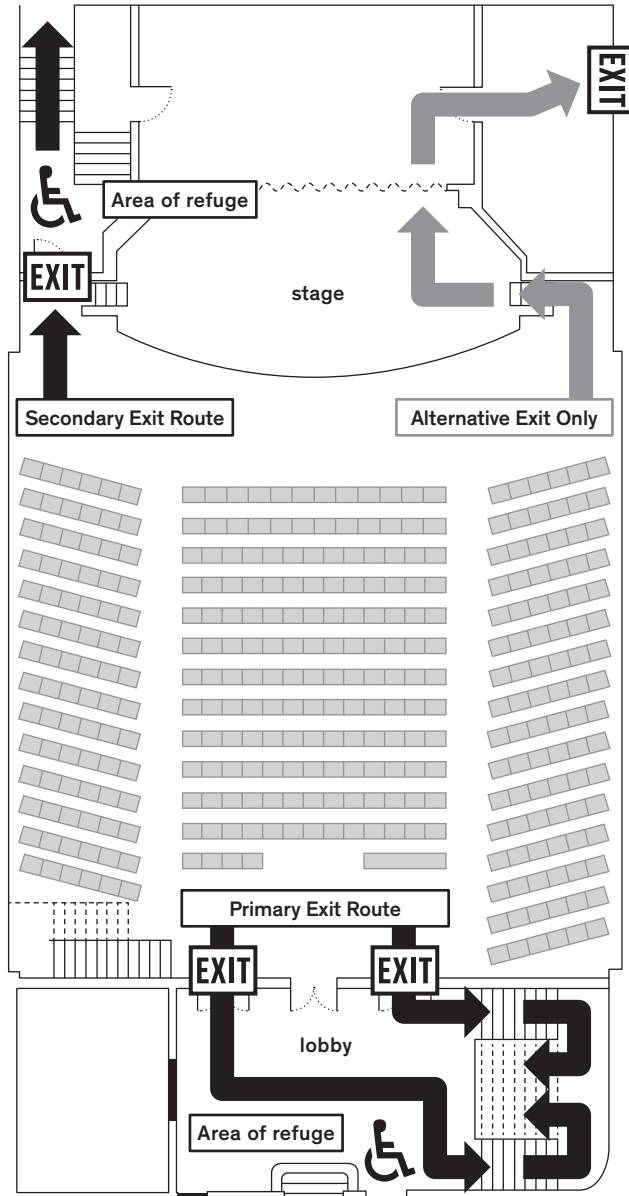
Mariana L. Quinn

Paul Rattigan

Jonathan Savilonis

John Knowles Paine Hall

For your safety, please note the location of the nearest emergency exit:



2022 – 23 Concert Season

Sunday, 9 October 2022

supported by the Fromm Music Foundation



Ensemble Recherche

Saturday, 25 February 2023

Line Upon Line

Saturday, 29 April 2023

The Thelma E. Goldberg Concert

collective lovemusic

All concerts are free and open to the public.

John Knowles Paine Hall, Harvard University Music Building.